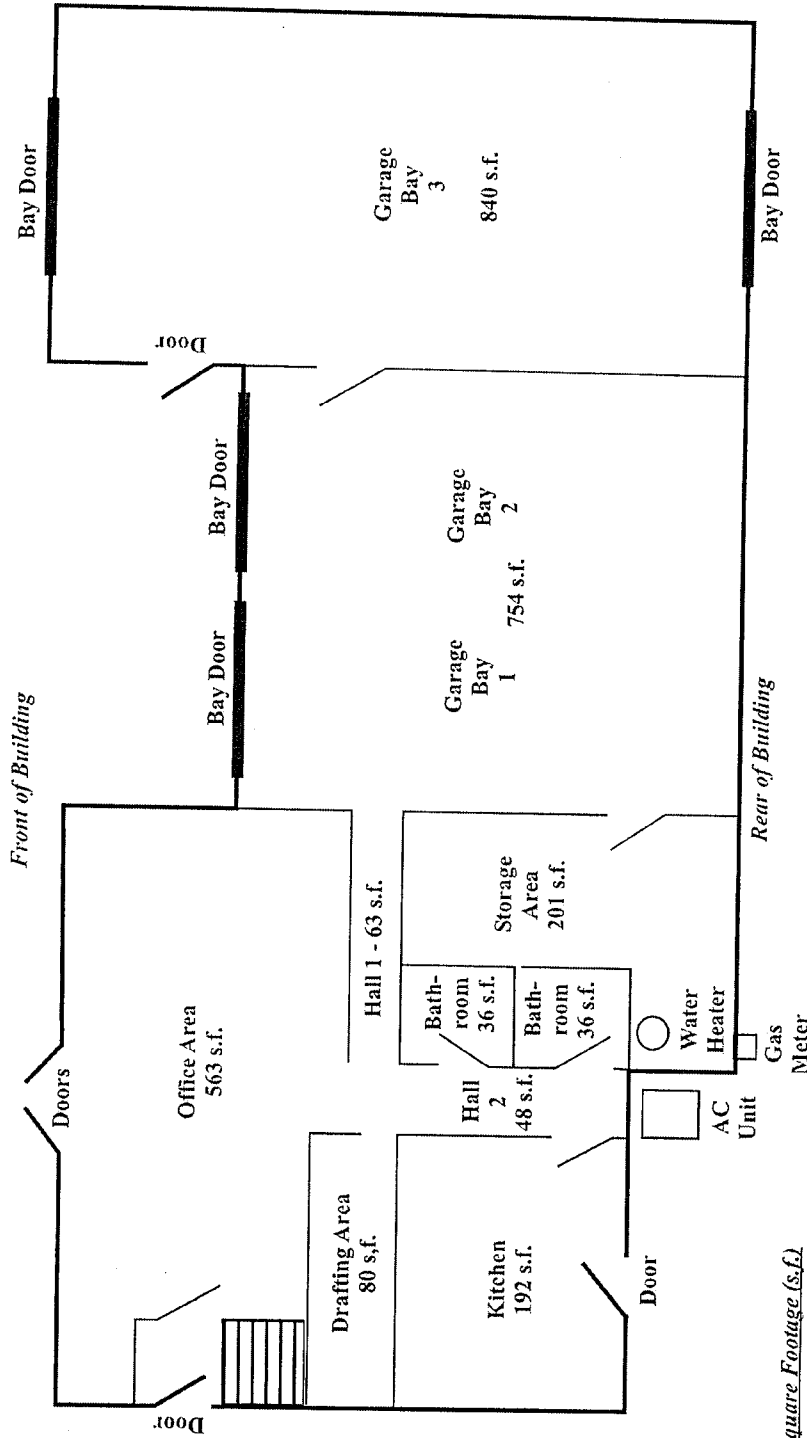


FIRST FLOOR PLAN
1" = 10'

213 ELM STREET, SALISBURY, MA



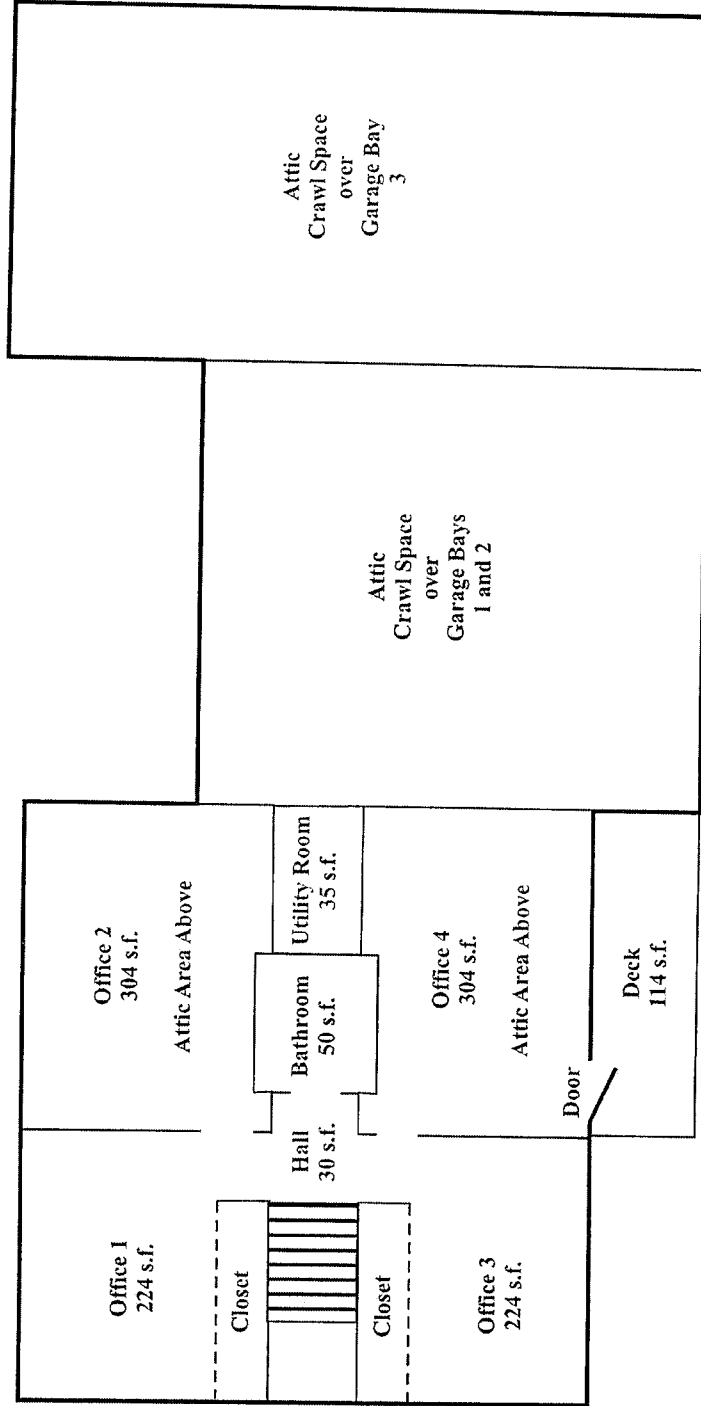
<u>First Floor Square Footage (s.f.)</u>	
Office Area	563
Kitchen	80
Storage	201
Bathrooms	72
Drafting Area	80
Halls	143
Garage Bays 1-2	754
Garage Bay 3	840
Total	2733

SECOND FLOOR PLAN

1" = 10'

213 ELM STREET, SALISBURY, MA

Front of Building



Rear of Building

Second Floor Square Footage (s.f.)

Office 1	224
Office 2	304
Office 3	224
Office 4	304
Hall	30
Bathroom	50
Utility Room	35
Total	1171

Deck	114
------	-----